

Downtown Austin Railroading

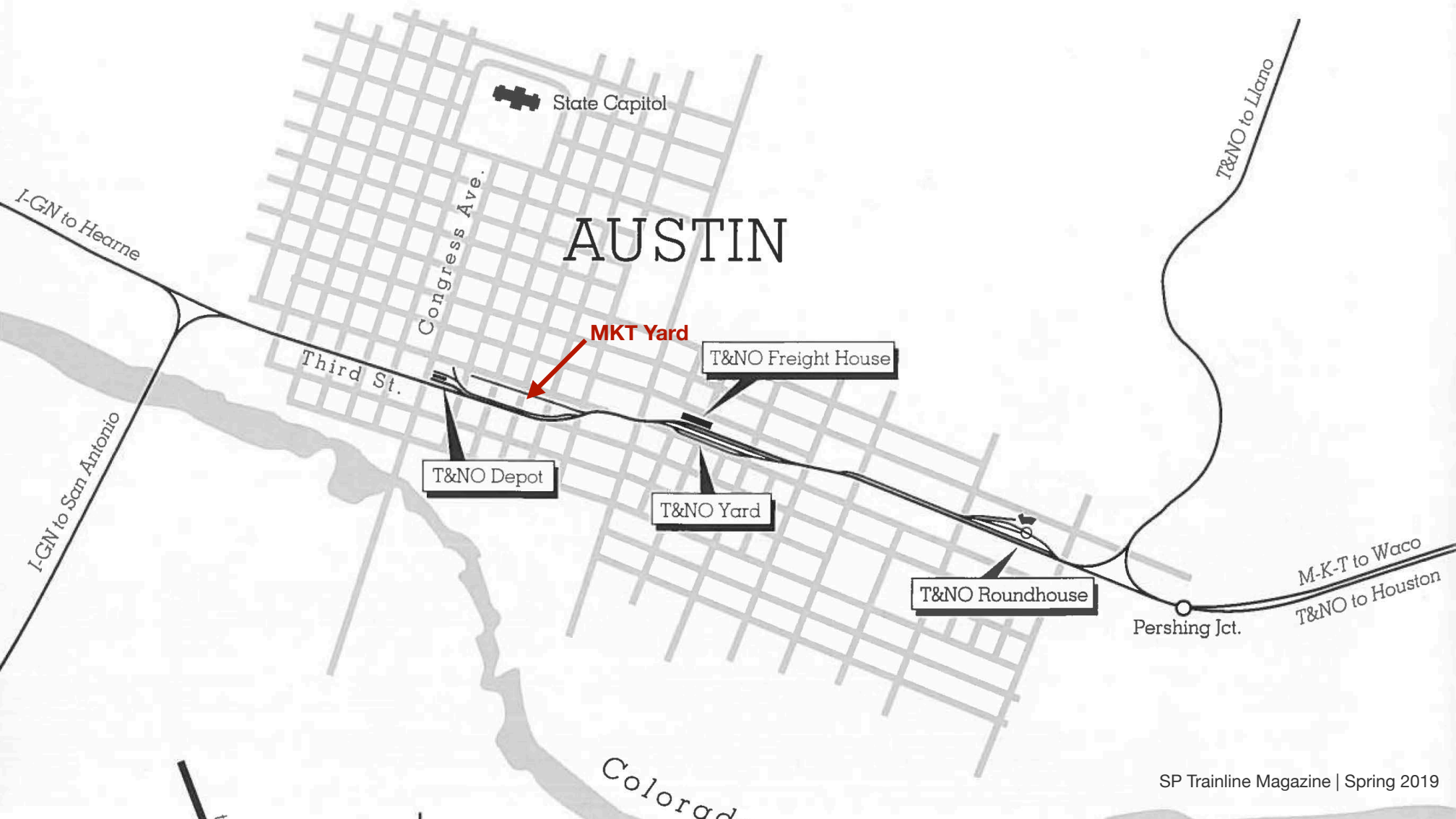
A brief overview (and mainly the Katy Yard)

Riley Triggs | Austin Model Railway Society | 18 July 2020



> NEXT





AUSTIN

State Capitol

Congress Ave.

Third St.

MKT Yard

T&NO Freight House

T&NO Depot

T&NO Yard

T&NO Roundhouse

Pershing Jct.

M-K-T to Waco
T&NO to Houston

T&NO to Llano

I-GN to Hearne

I-GN to San Antonio

Colorado

CONGRESS AVE

EAST AVE (IH 35)

Pershing Junction

T&NO Roundhouse

SIXTH ST

PEDERNALES ST

Pershing Junction

FOURTH ST

CHICON ST

CONGRESS AVE

H&TC/T&NO/SP Station

MKT Yard

EAST AVE (IH 35)

T&NO Yard

FOURTH ST

THIRD ST

WALLER ST

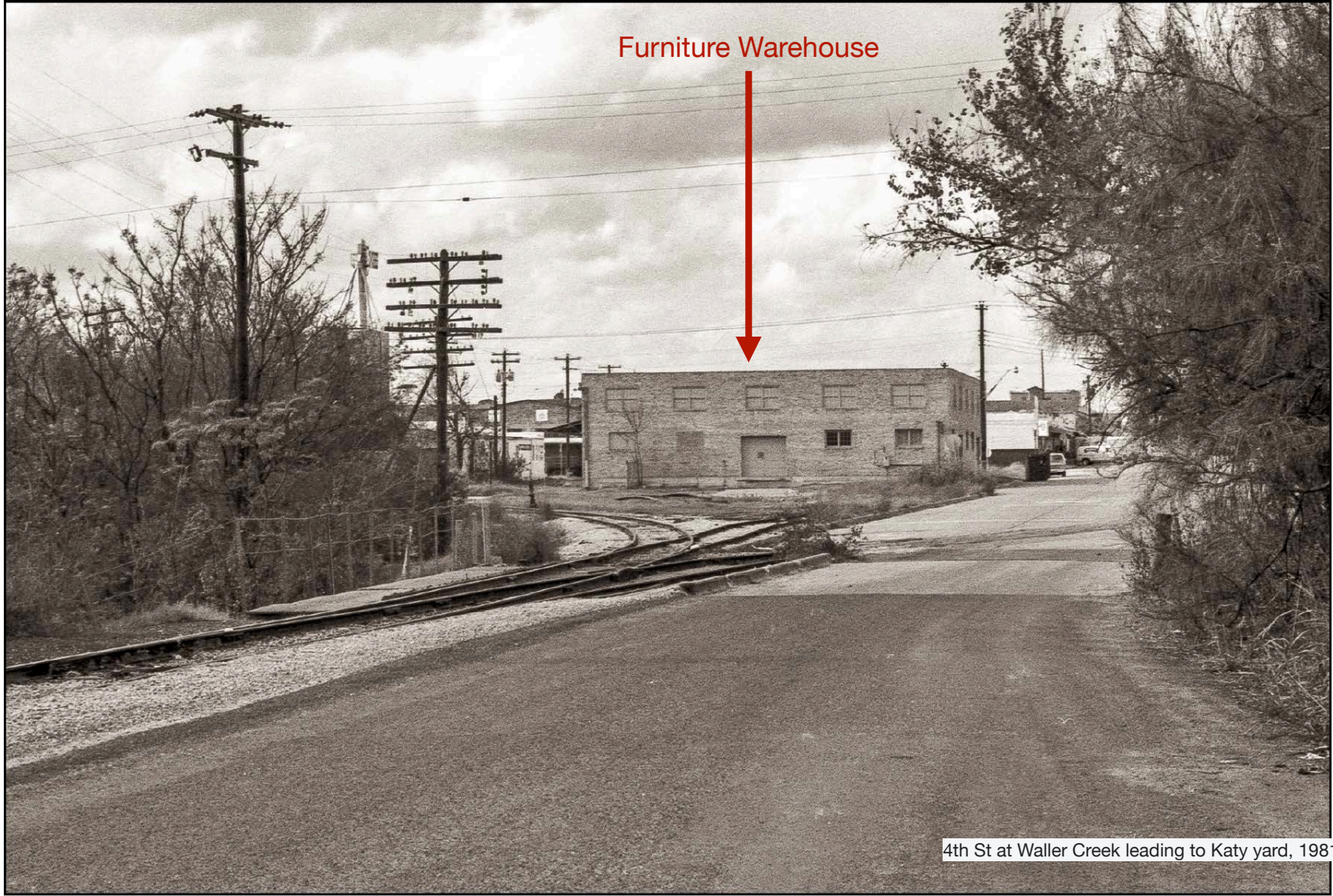


GP 9 Extra 241 at 3rd Street second special from Houston for UT vs Rice football game, October 22, 1955 | F Dale Morris



Third Street at Pershing Jct looking east | Southern Pacific

Furniture Warehouse

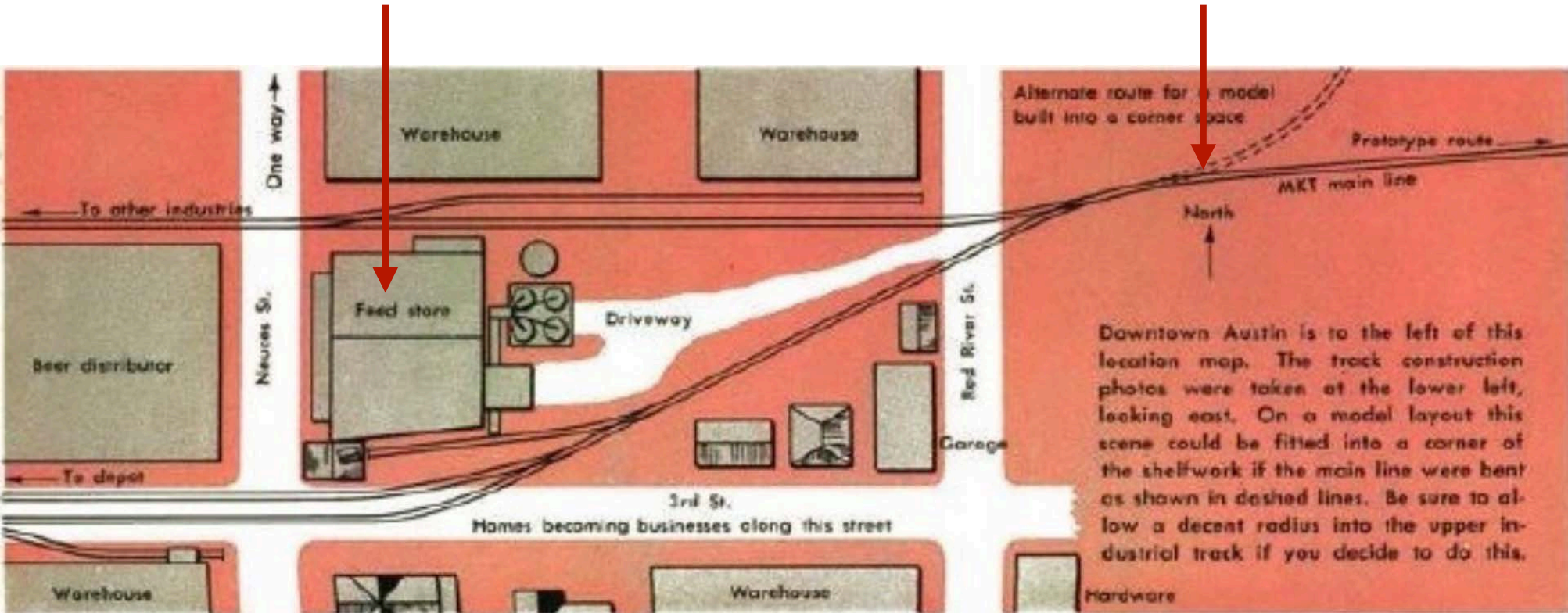




4th St at Waller Creek, 2017 | Gary Phelps

Feed store

Pershing Junction





To Katy Yard



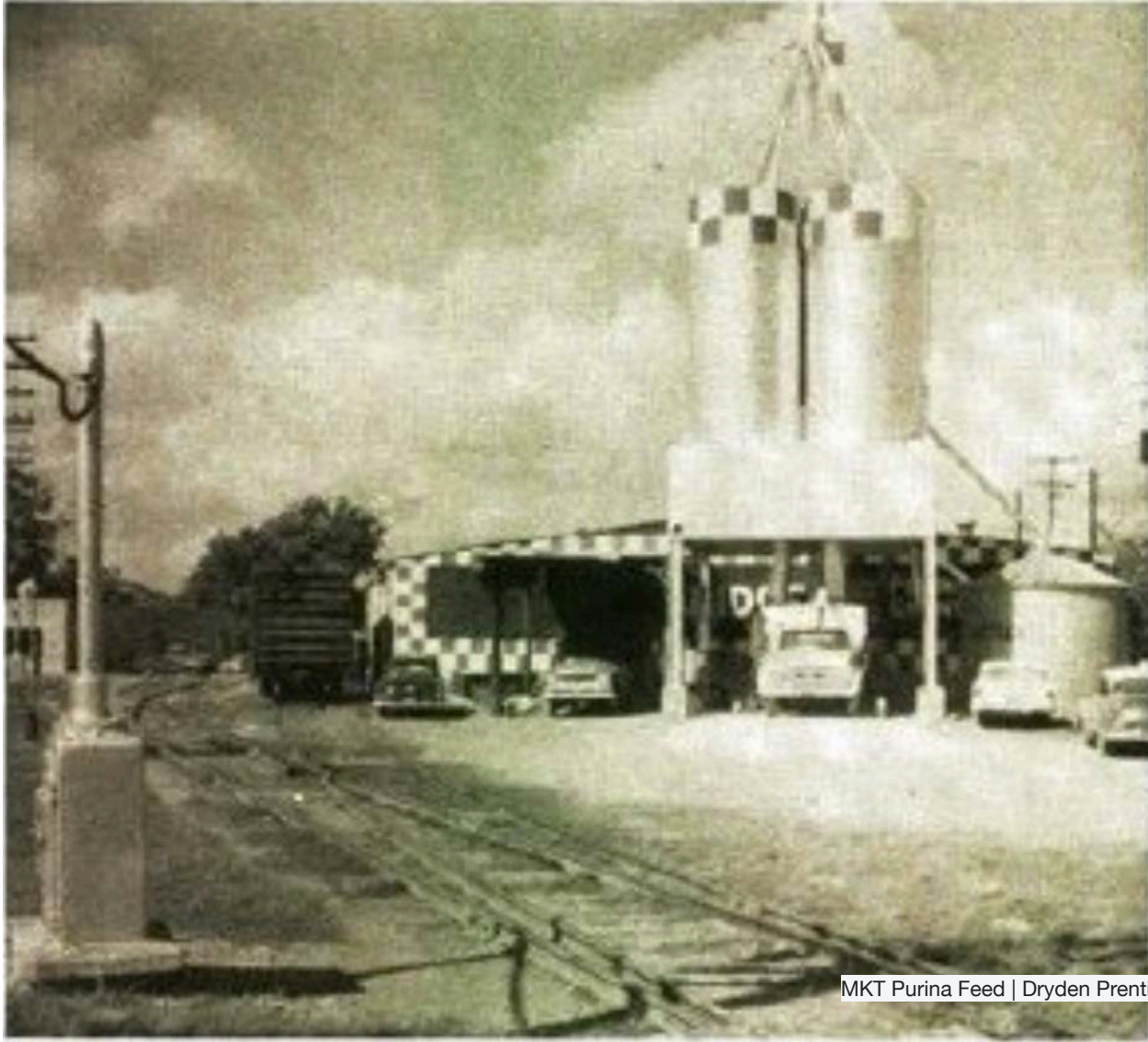
Katy Yard to right - boxcar is at Feed Co. siding, 1981 | Gary Phelps



Feed Co. siding, 1981 | Gary Phelps

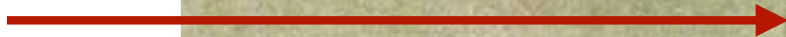


MKT Purina Feed | Dryden Prentice Model Railroader February 1969

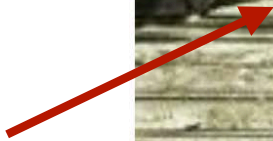


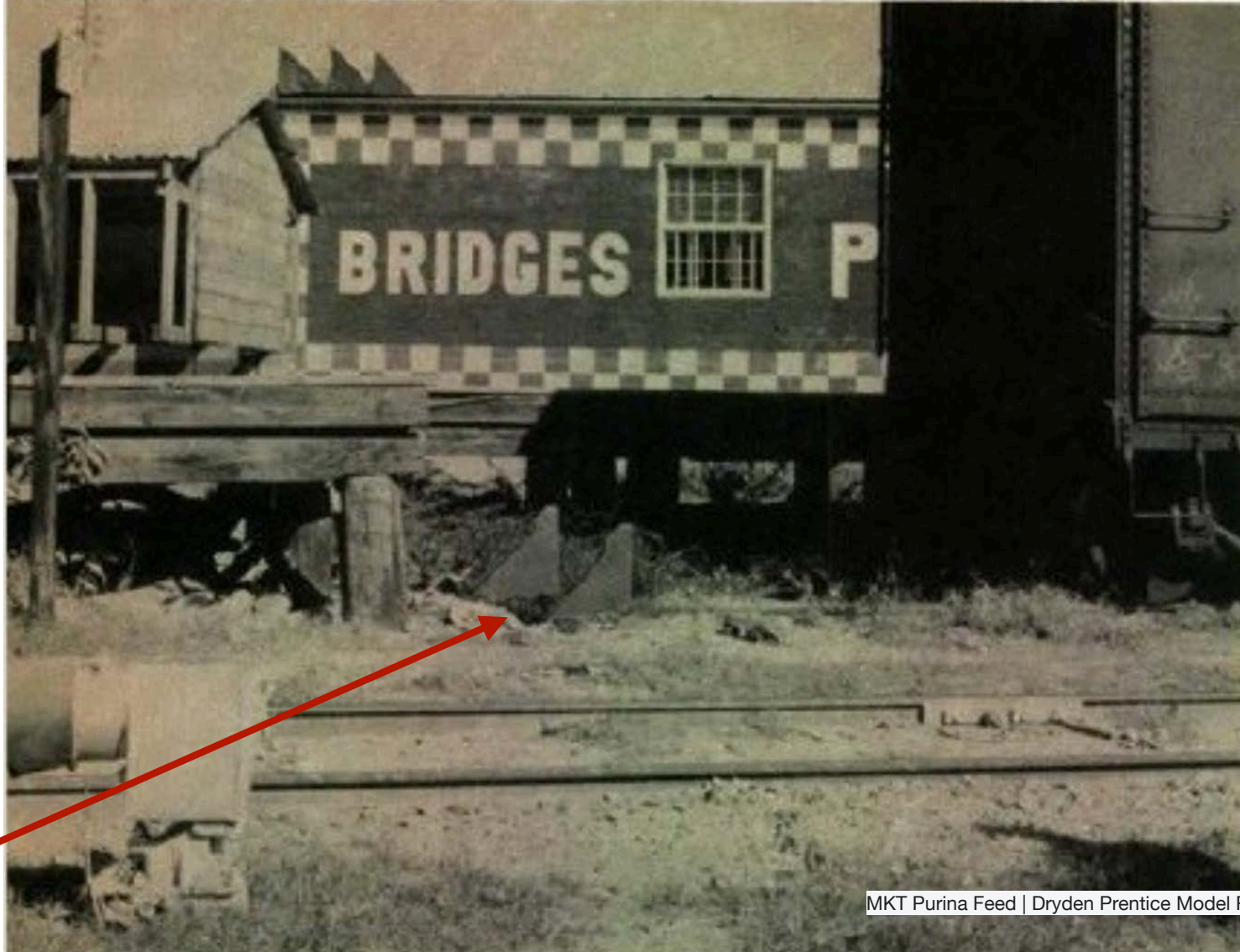
MKT Purina Feed | Dryden Prentice Model Railroader February 1969

Elevator



Conveyor belt

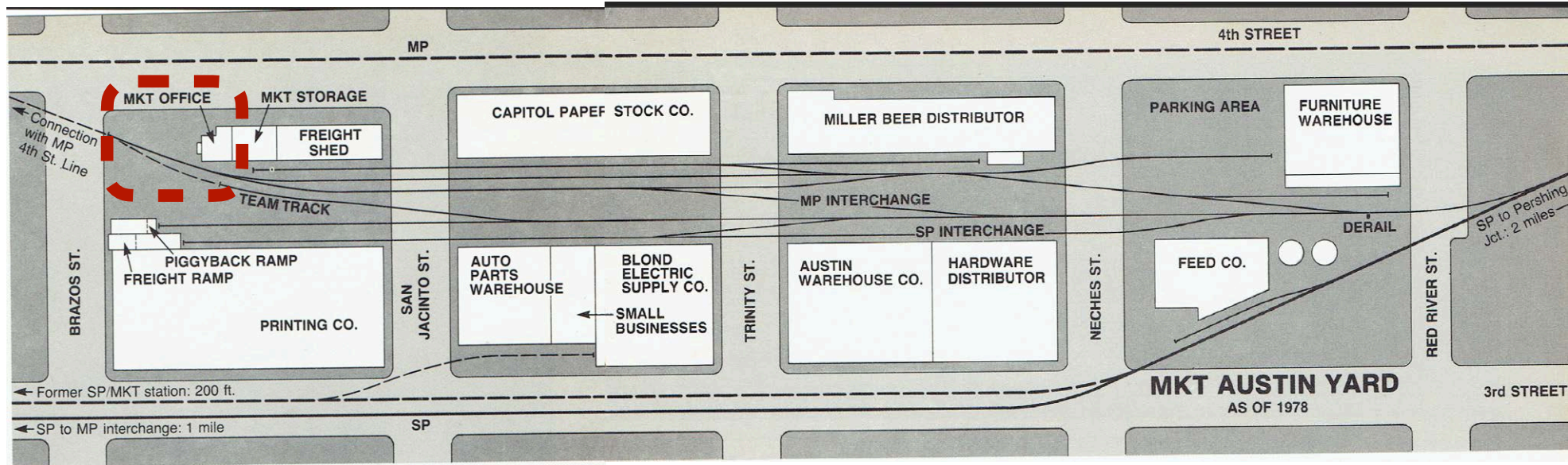




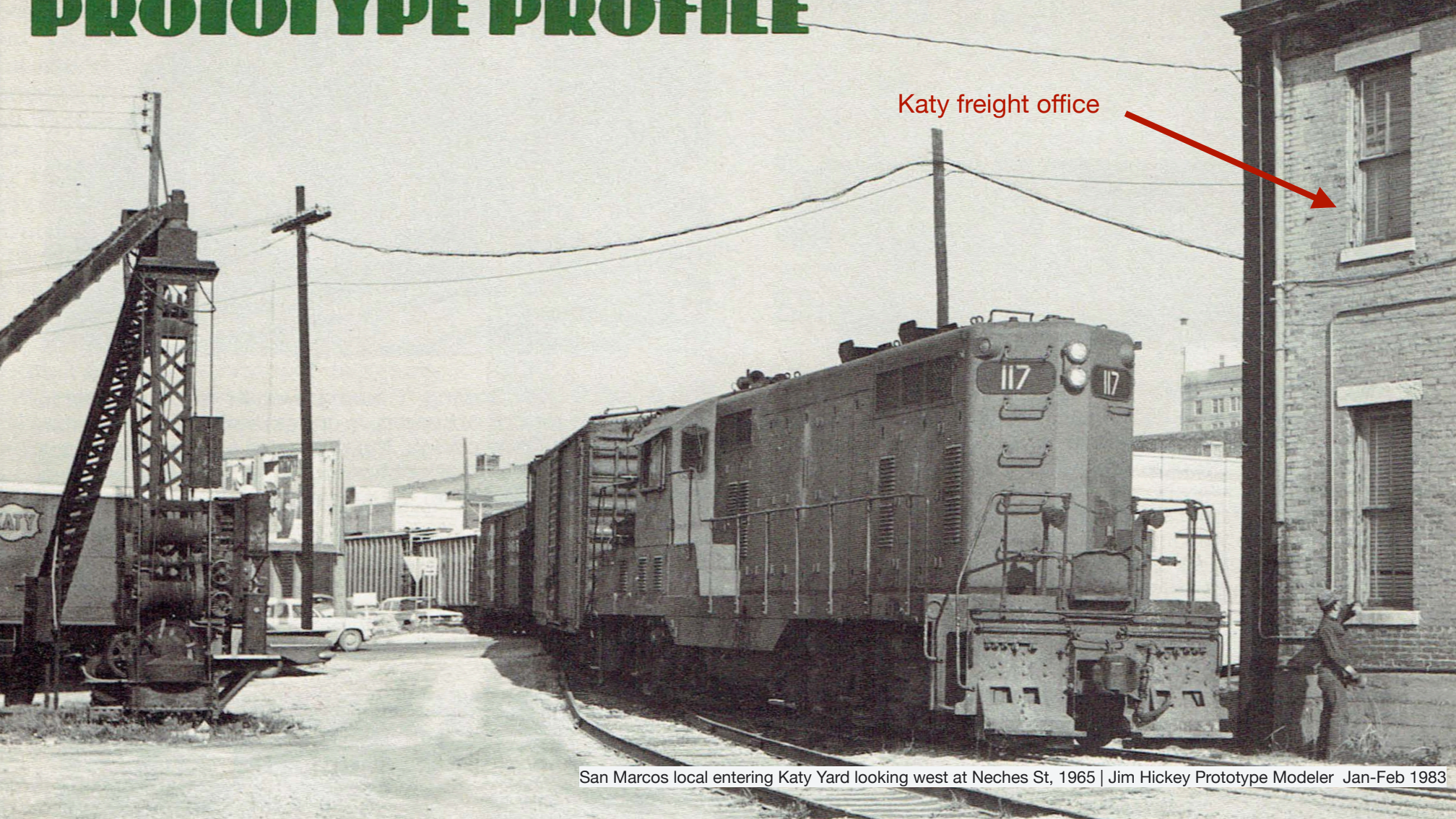
Wheelstops



Ties buried by dirt
and path beside track



PROTOTYPE PROFILE



Katy freight office

San Marcos local entering Katy Yard looking west at Neches St, 1965 | Jim Hickey Prototype Modeler Jan-Feb 1983



Stiff-leg derrick, 1980s | Cyril Durrenburger



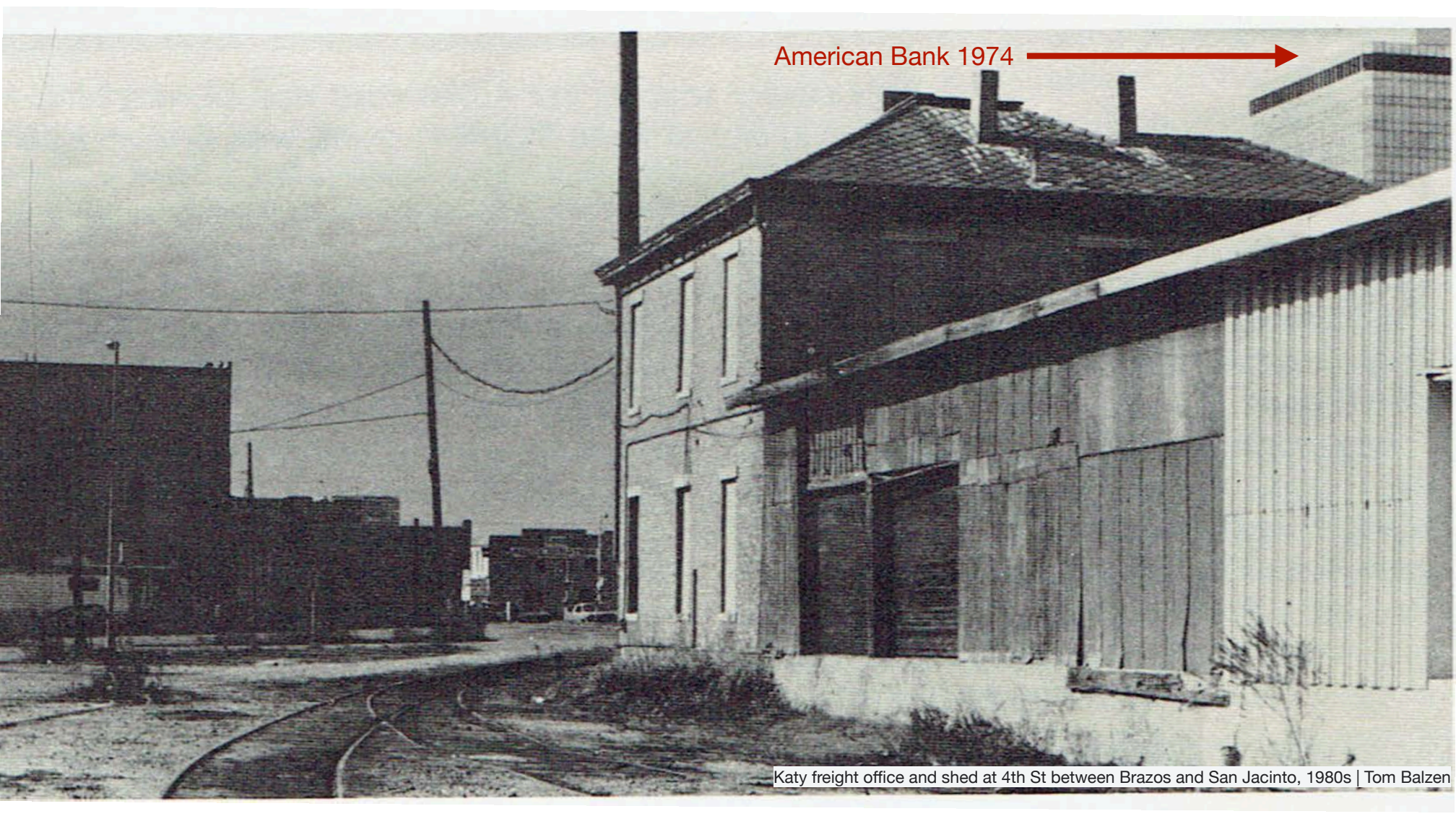
Katy freight office at 4th St between Brazos and San Jacinto, 1981 | Gary Phelps



Katy freight office at 4th St between Brazos and San Jacinto, 1980s | Tom Balzen



U25B in front of Katy freight office Dec 1973 | Tom Balzen

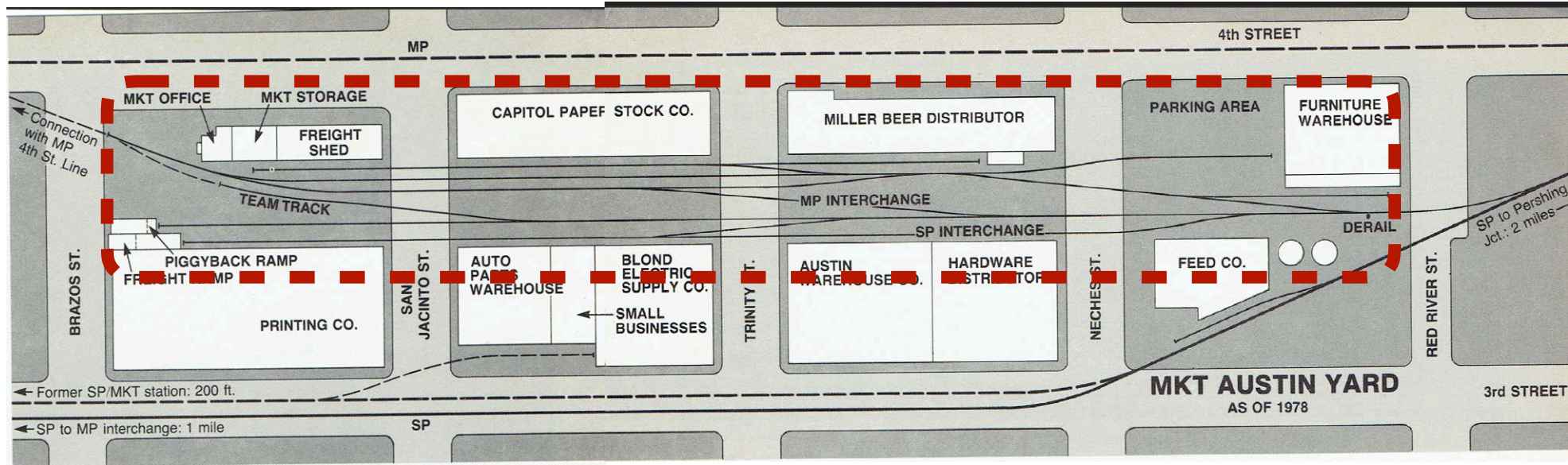


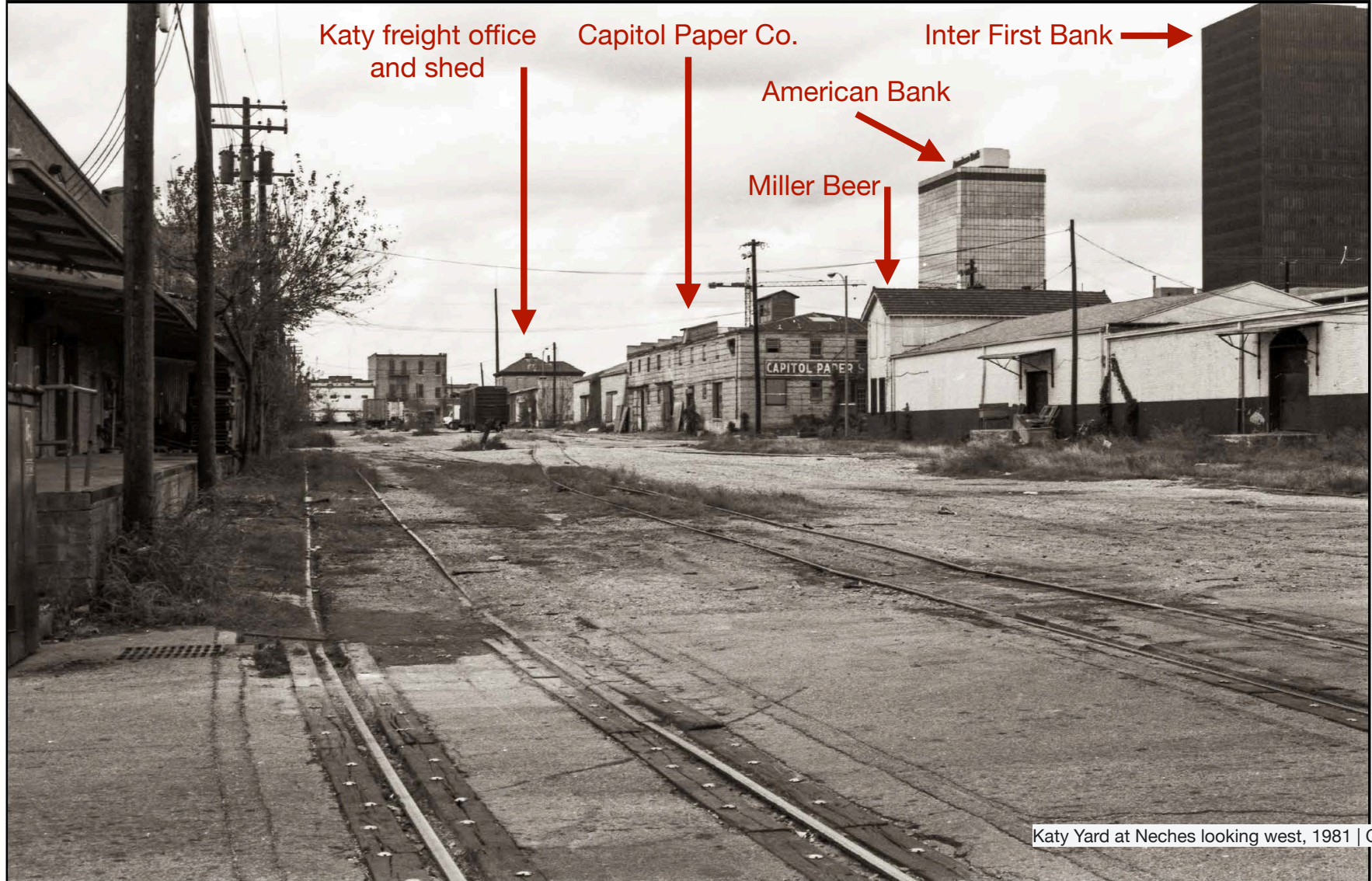
American Bank 1974

Katy freight office and shed at 4th St between Brazos and San Jacinto, 1980s | Tom Balzen

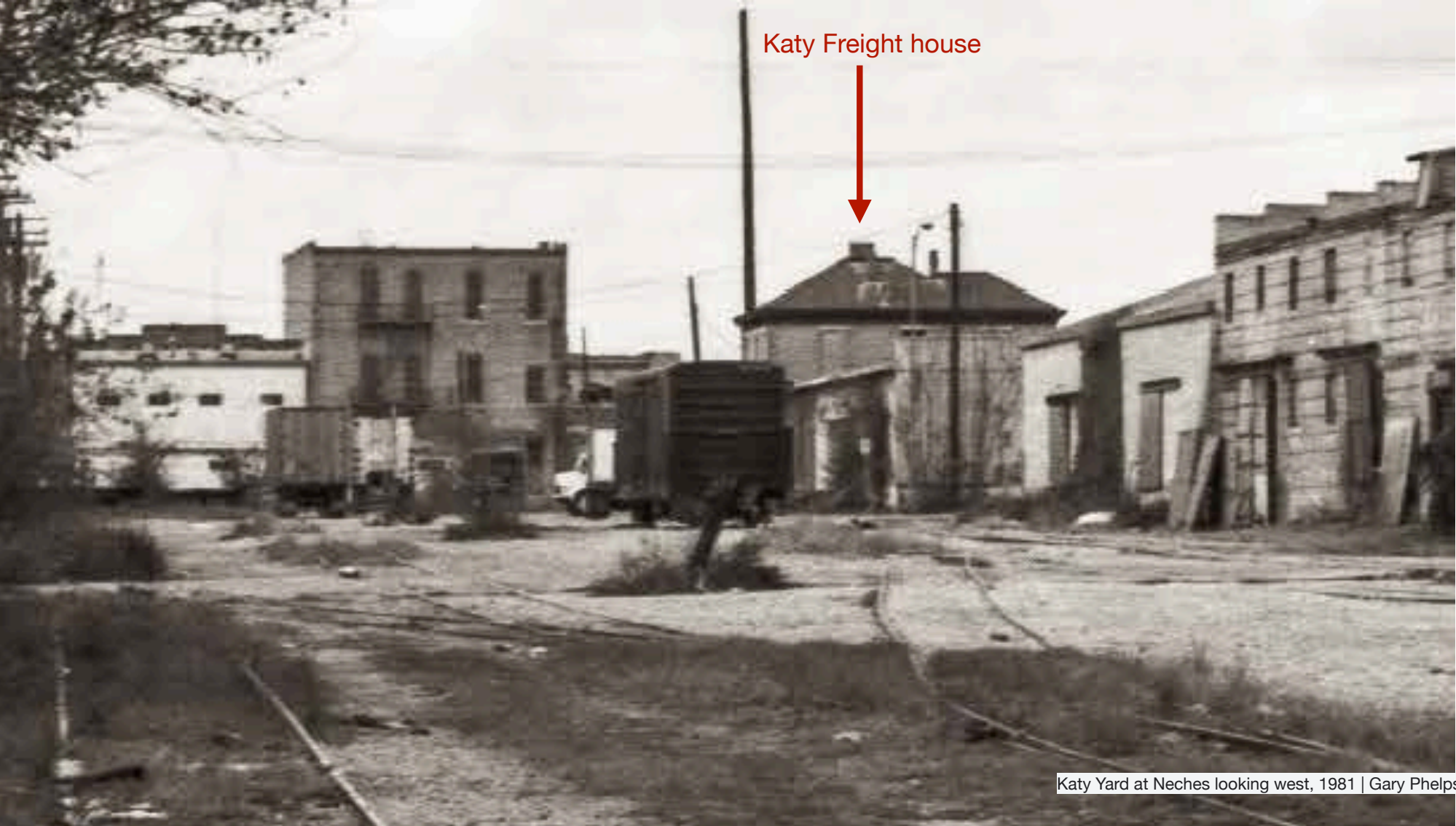
Furniture Warehouse
(previously a lumber company warehouse)

Miller Beer

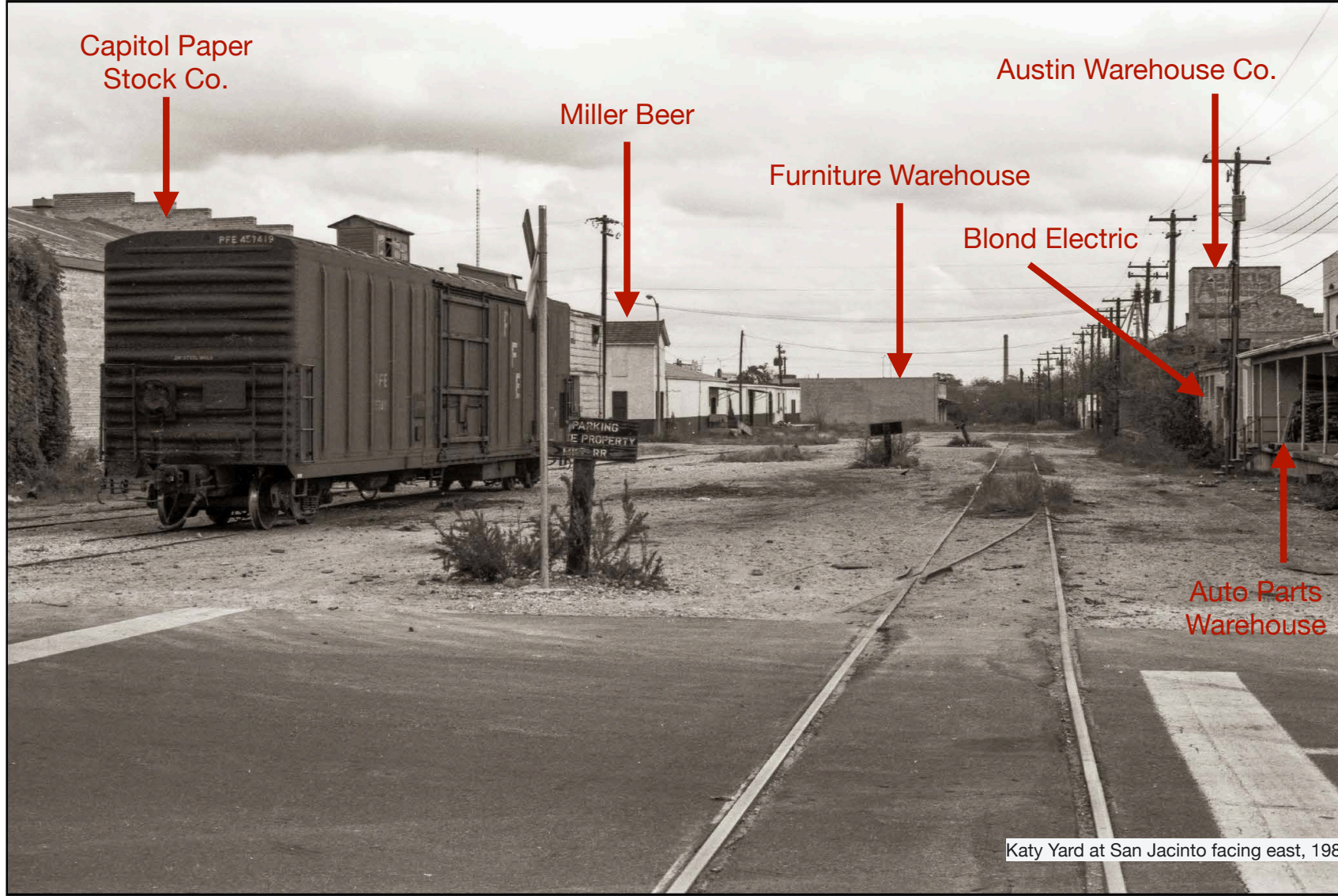




Katy Yard at Neches looking west, 1981 | Gary Phelps



Katy Freight house



Capitol Paper
Stock Co.

Miller Beer

Austin Warehouse Co.

Furniture Warehouse

Blond Electric

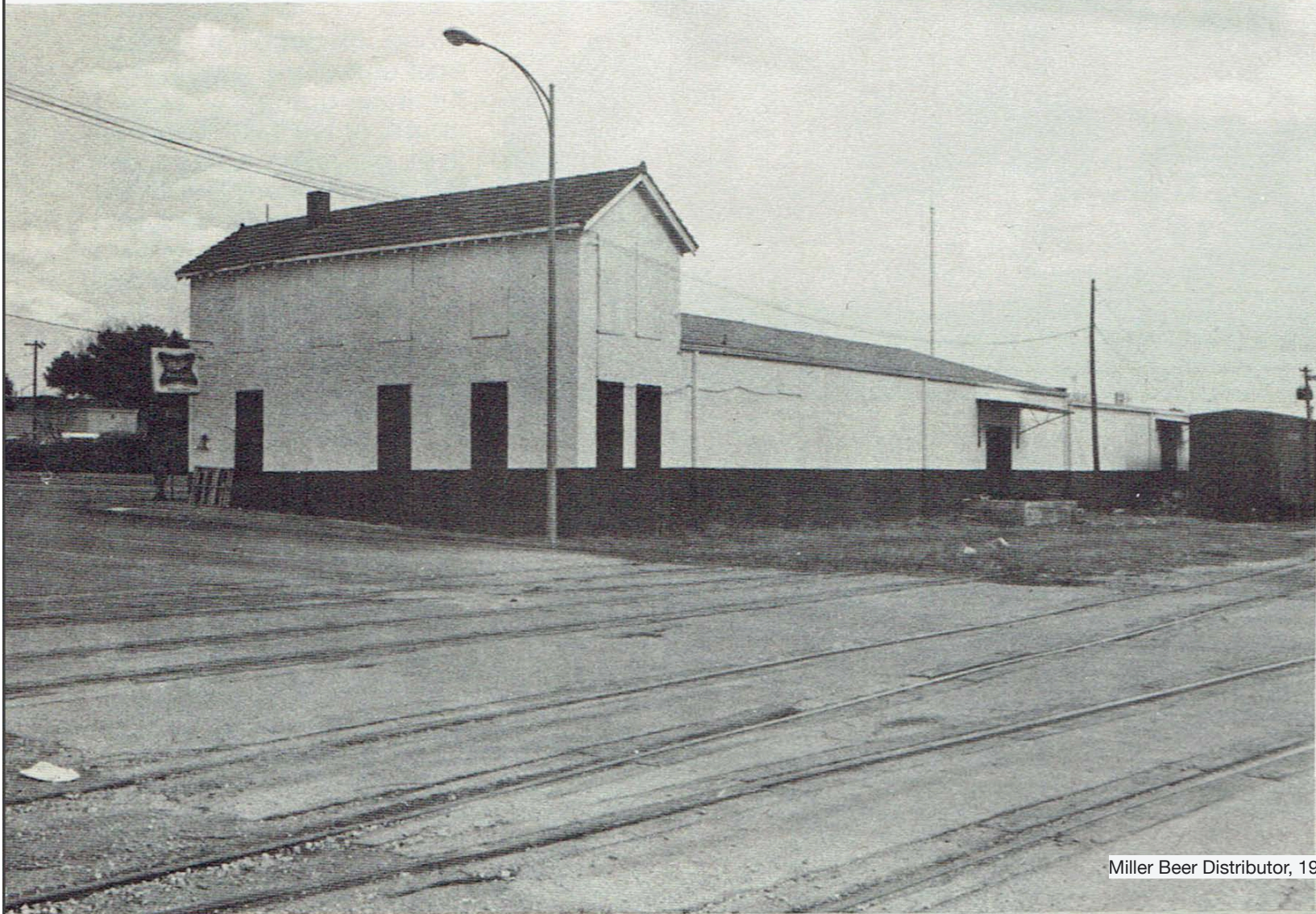
Auto Parts
Warehouse

Railroads we'd like to model

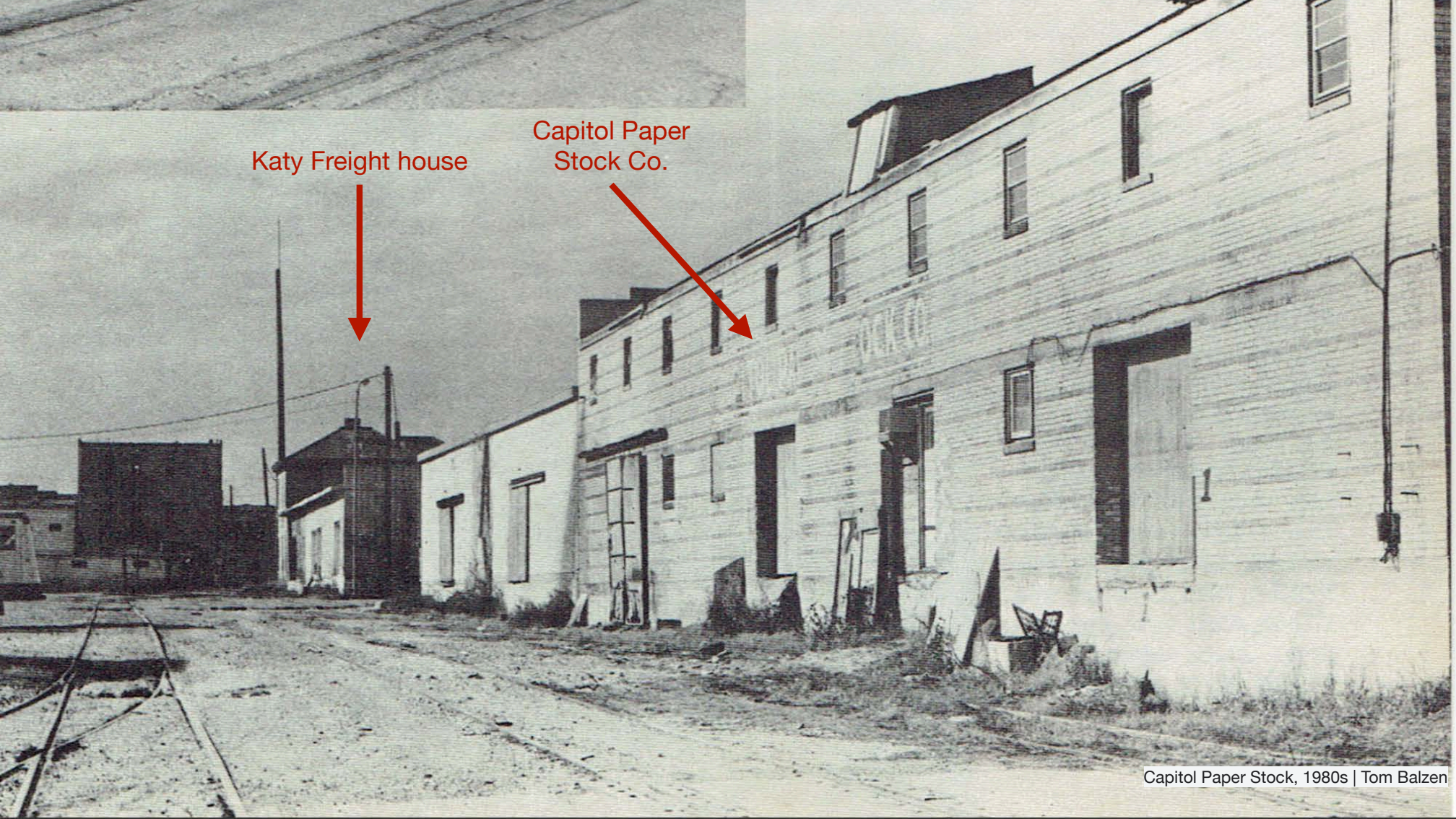
MKT GP 7

SP S2 did the switching
in Katy's yard in the 60s

Gravel paved except at
switch points



Miller Beer Distributor, 1980s | Tom Balzen



Katy Freight house

Capitol Paper
Stock Co.

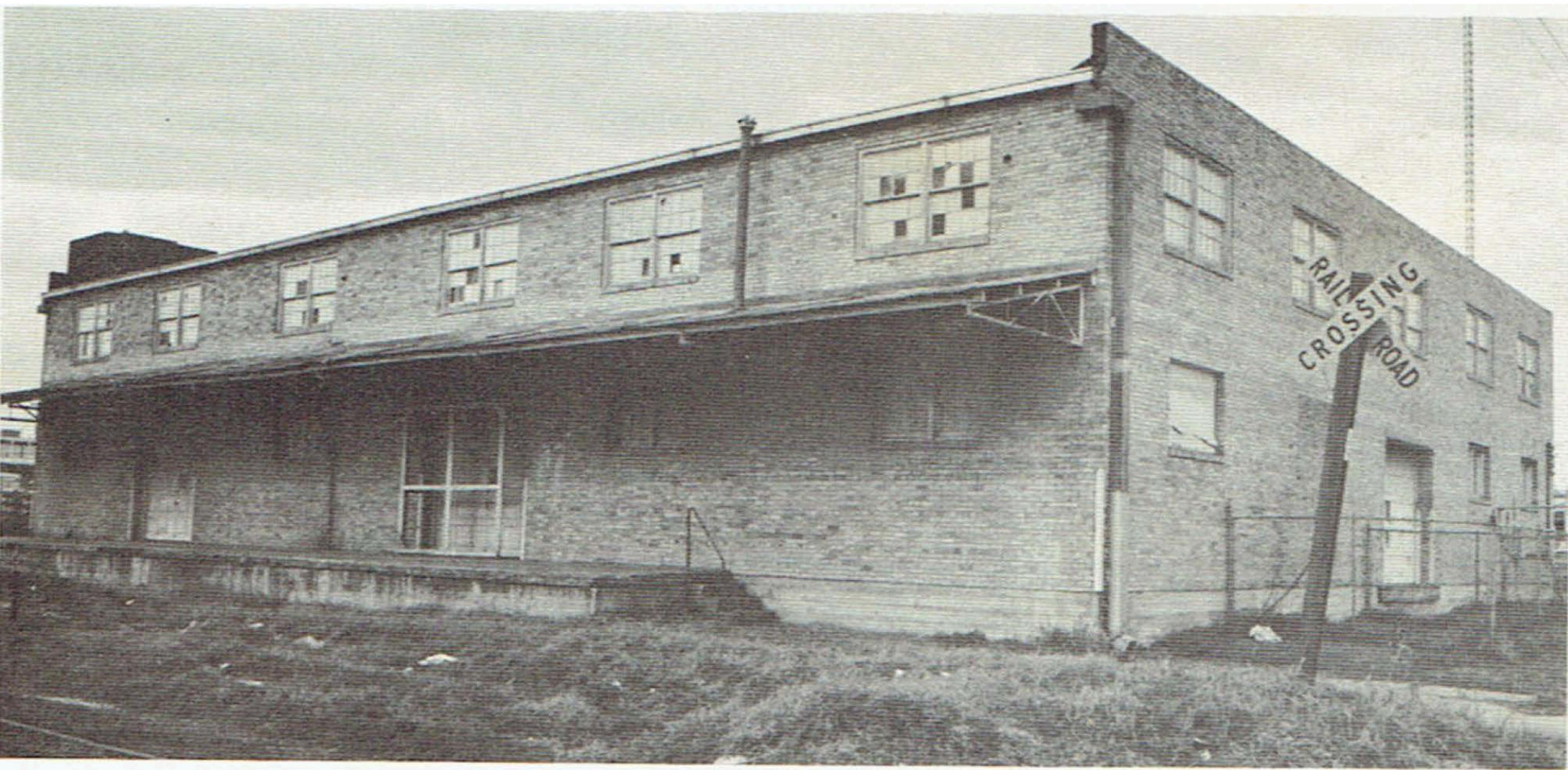
Blond Electric
(Sunshine Biscuit Co 1950s)

Auto Parts Warehouse

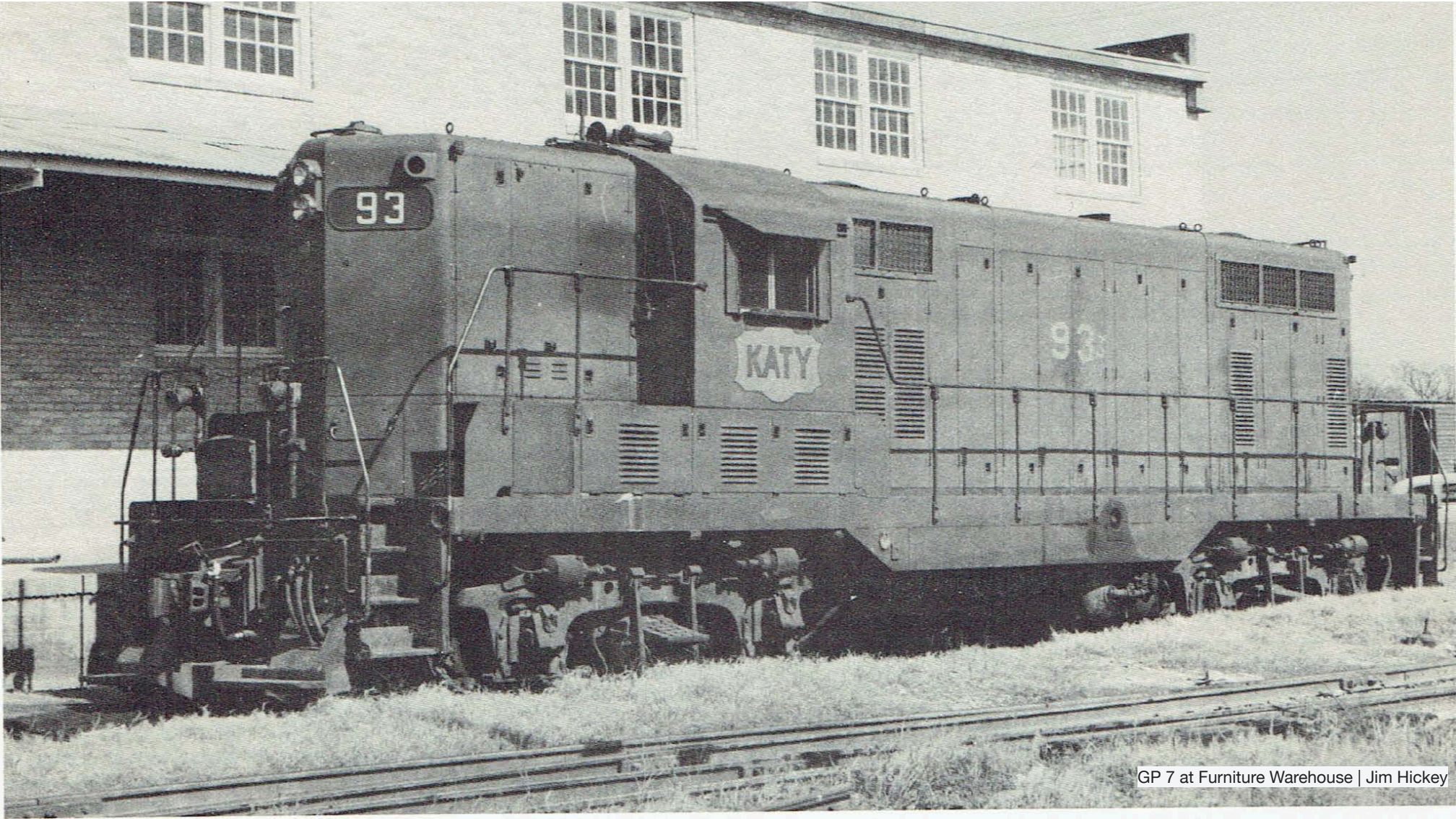




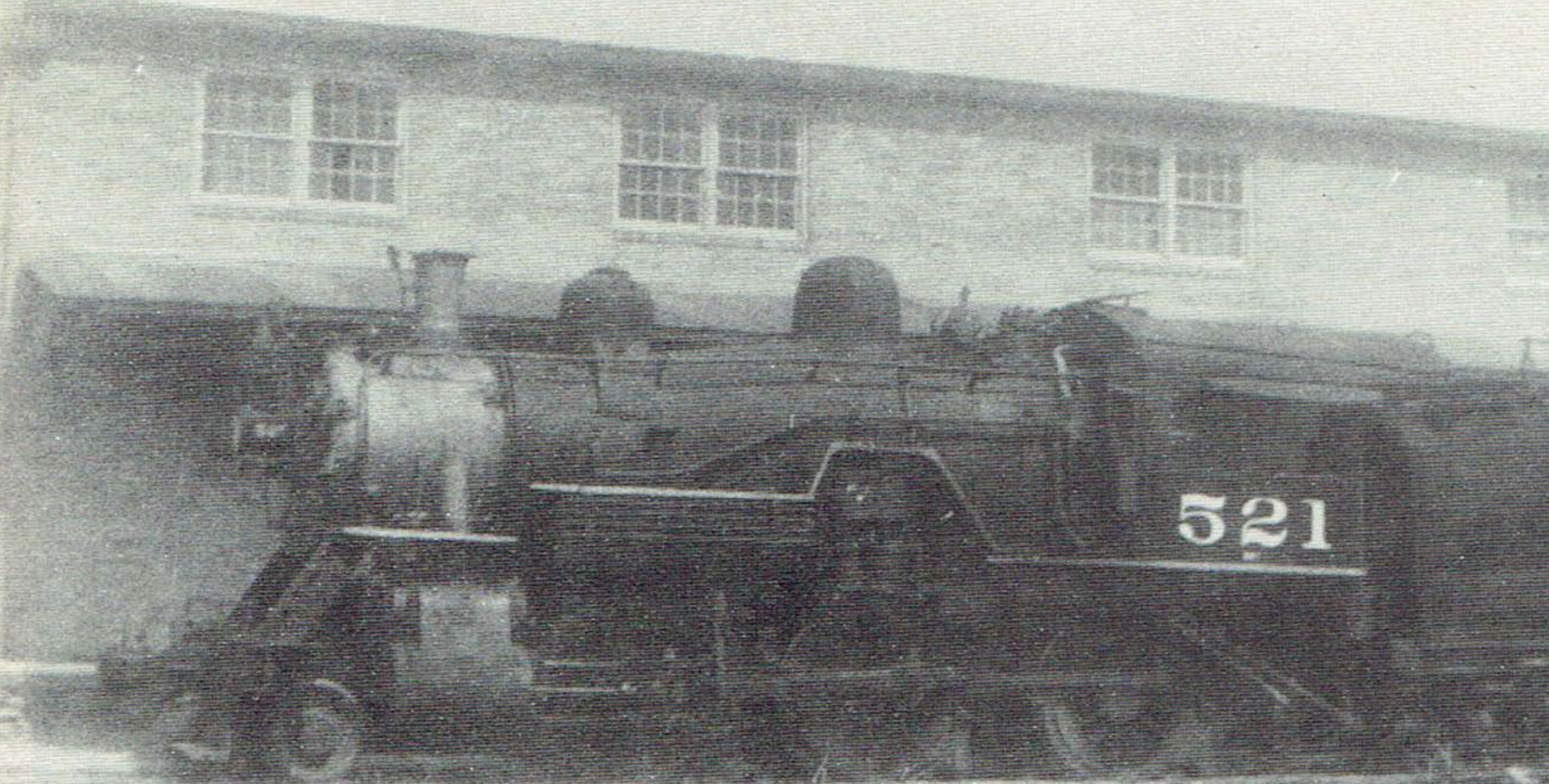
Austin Warehouse Co., 1980s | Tom Balzen



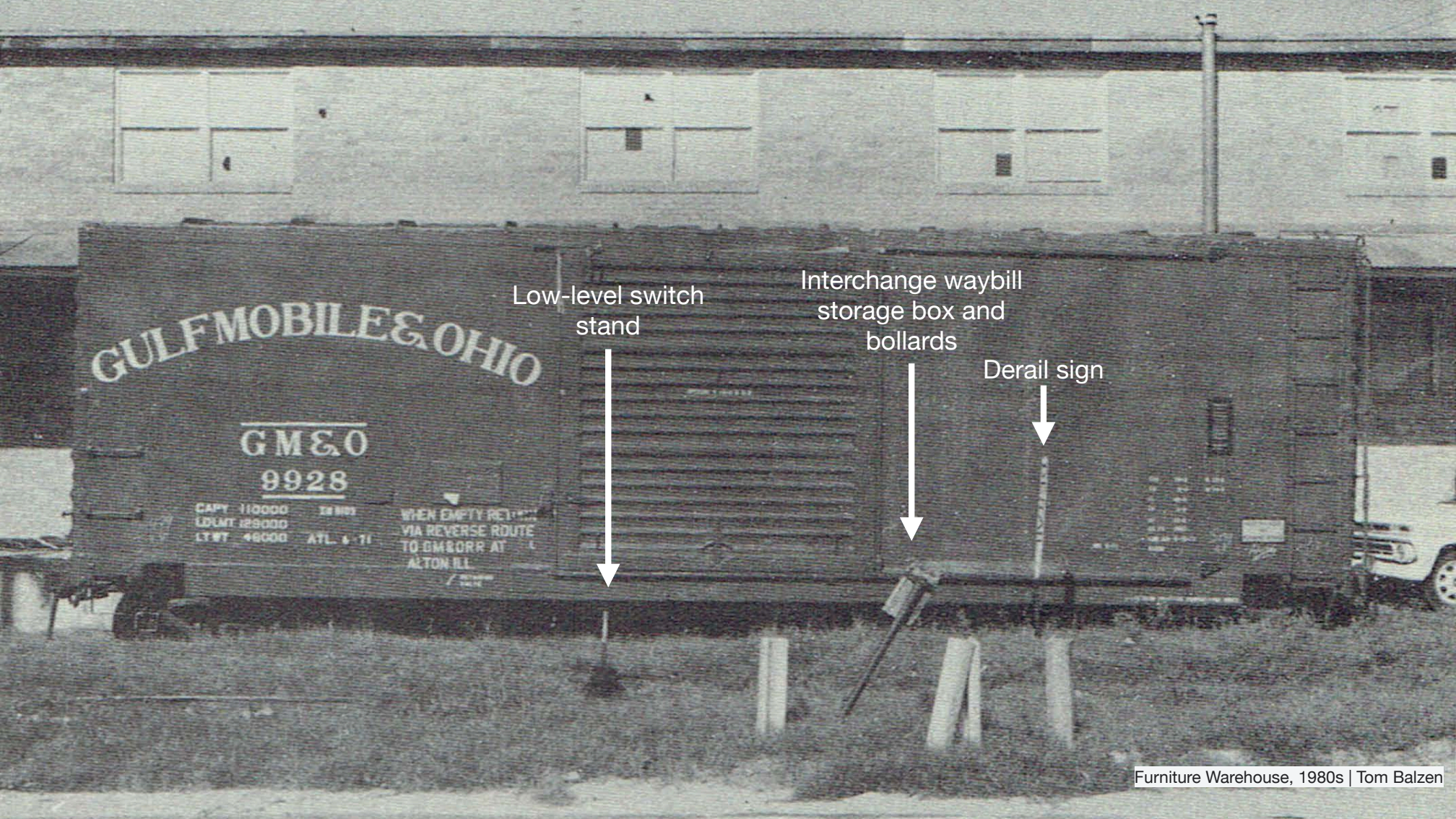
Furniture Warehouse, 1980s | Tom Balzen



GP 7 at Furniture Warehouse | Jim Hickey



Katy Mogul 2-6-0 at Furniture Warehouse, 1950s | Jim Hickey



GULF MOBILE & OHIO

G M & O
9928

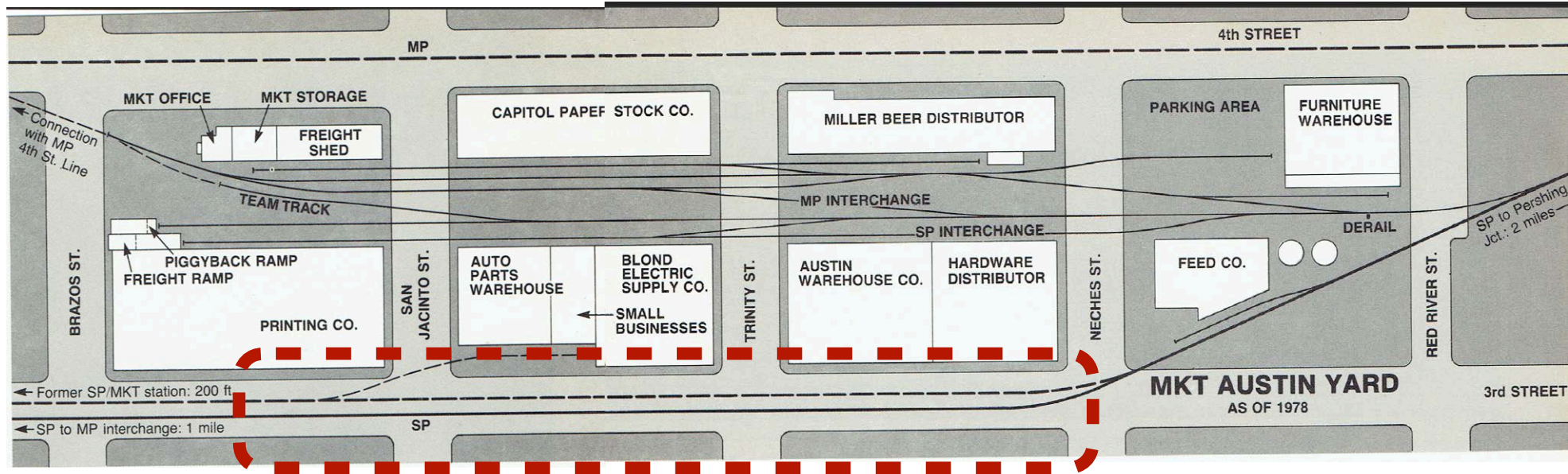
CAPY 110000 EM 1101
LDWT 125000
LT WT 46000 ATL 4-71

WHEN EMPTY RETURN
VIA REVERSE ROUTE
TO GMSORR AT
ALTON ILL

Low-level switch
stand

Interchange waybill
storage box and
bollards

Derail sign



Whitley Printing Co. (previously an automobile dealer receiving yellow Katy double door automobile box cars

Auto Parts Warehouse

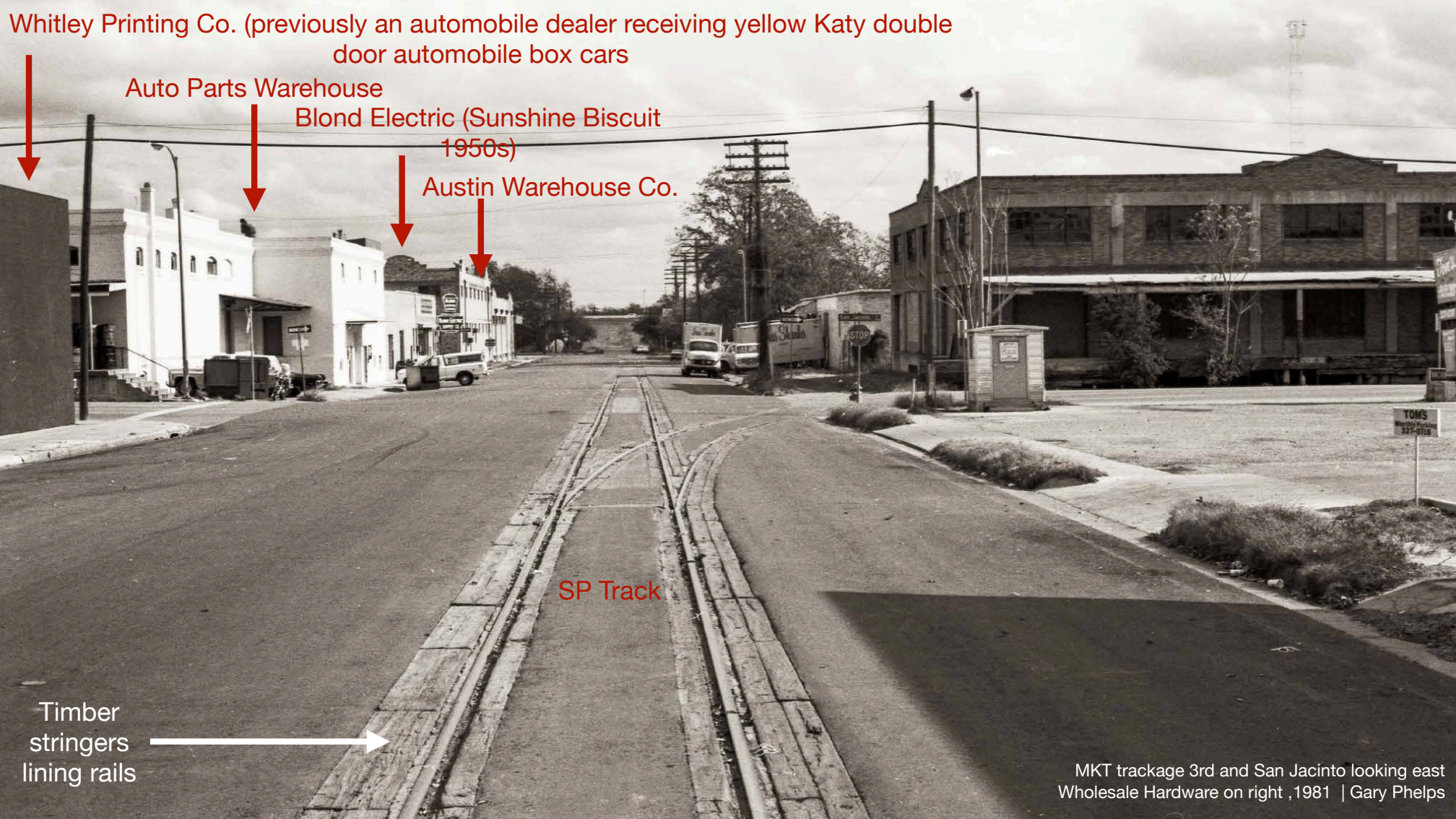
Blond Electric (Sunshine Biscuit 1950s)

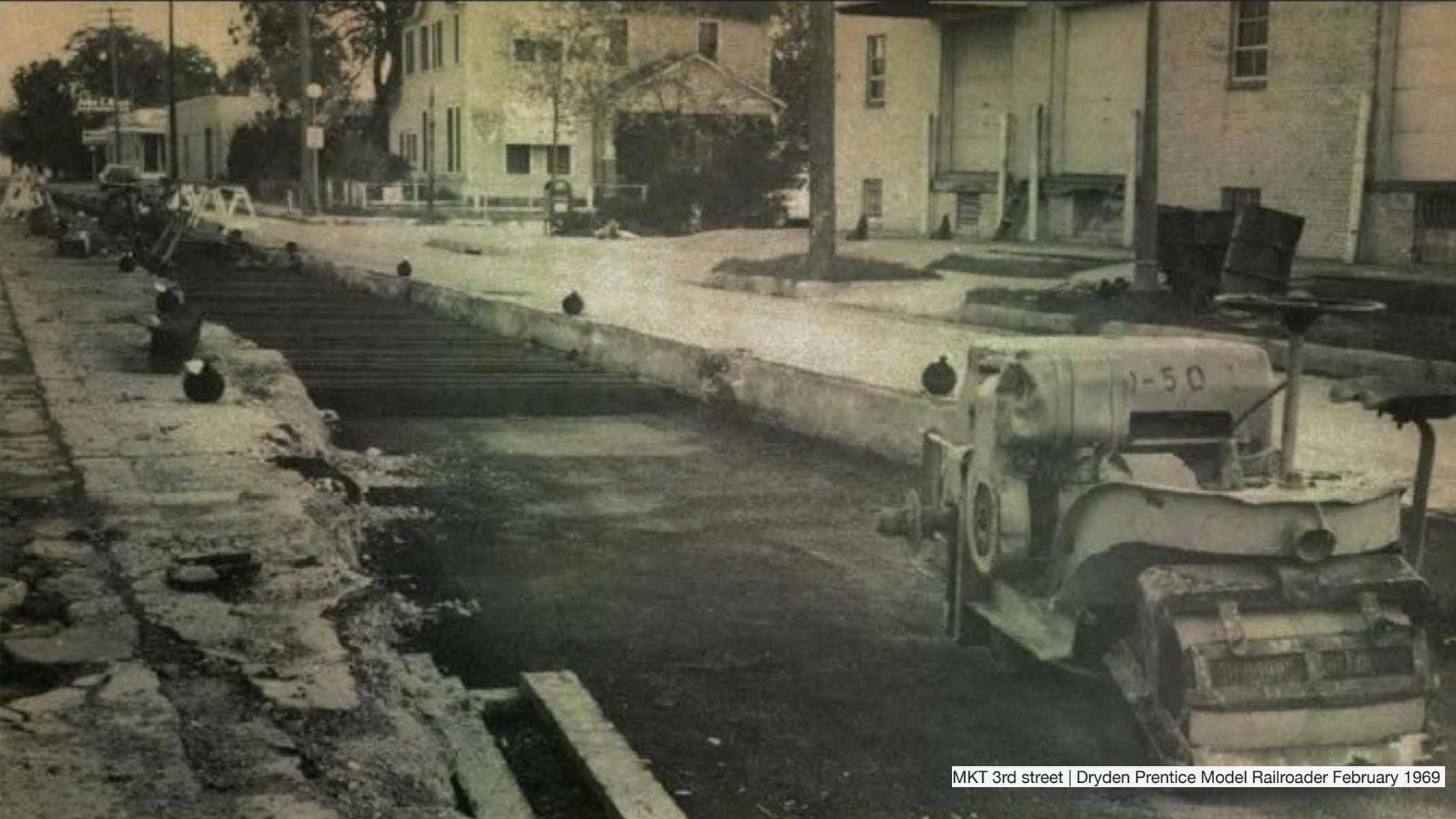
Austin Warehouse Co.

SP Track

Timber stringers lining rails

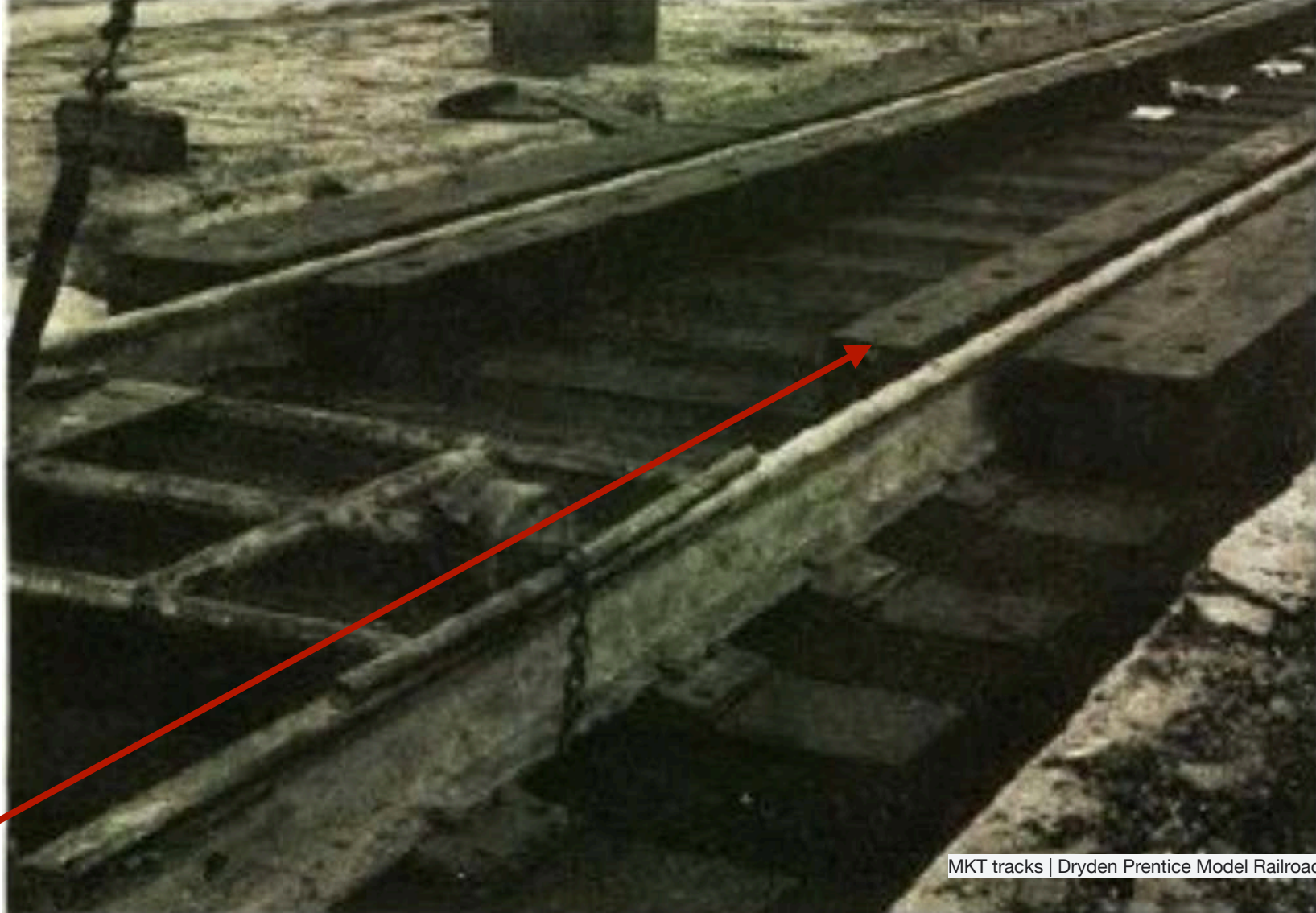
MKT trackage 3rd and San Jacinto looking east
Wholesale Hardware on right ,1981 | Gary Phelps

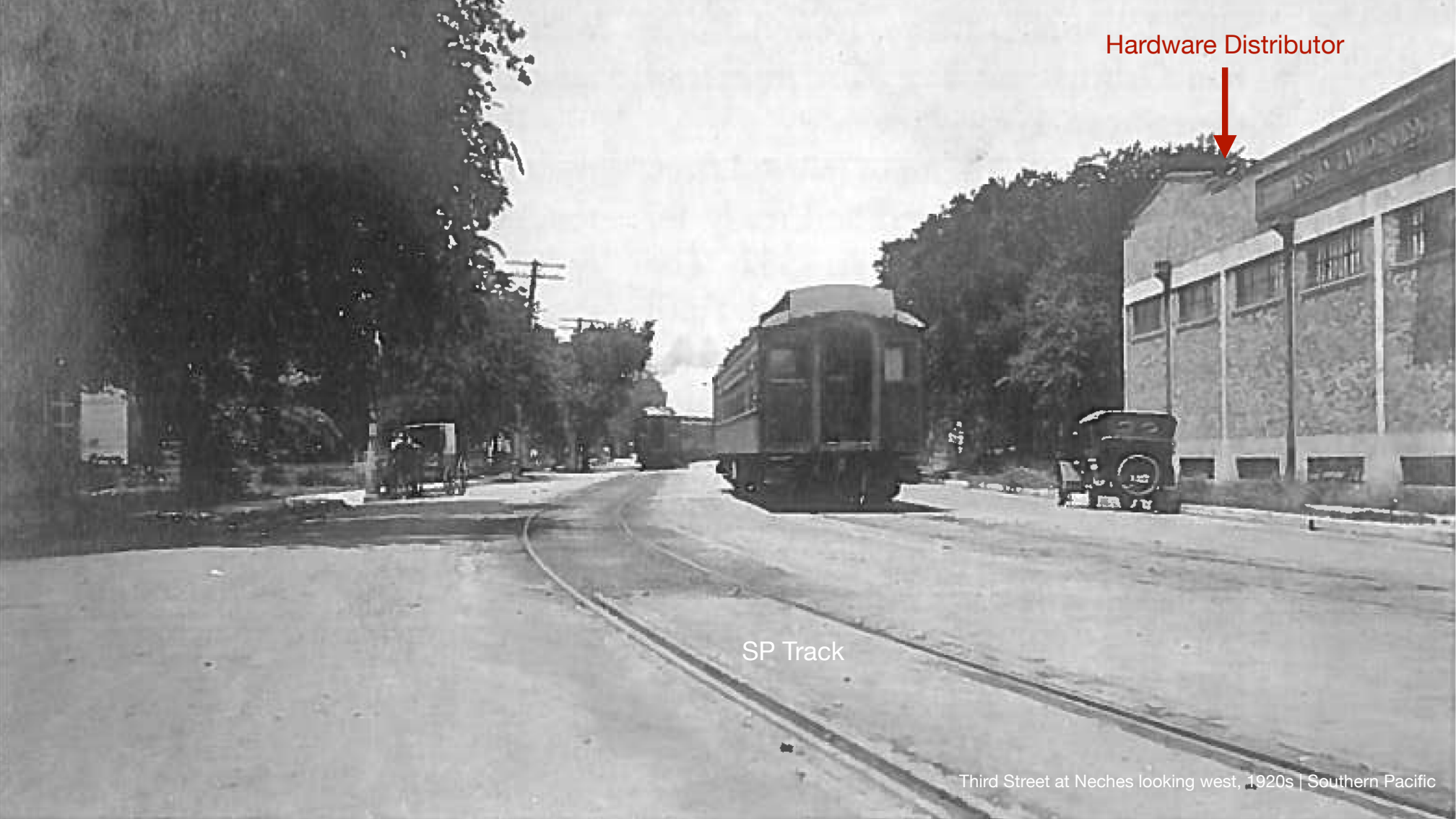




MKT 3rd street | Dryden Prentice Model Railroader February 1969

Timber
lining rails





Hardware Distributor



SP Track



Austin Warehouse Co.

Hardware Distributor

Blond Electric

SP Track



International & Great Northern Station 1800s | 3rd and Congress



International & Great Northern Station 1800s | 3rd and Congress

I. & G. N. R. R. Depot, Austin, Tex.



International & Great Northern Station 1800s | southwest corner of 3rd and Congress



International & Great Northern Station (MoPac) | southwest corner of 3rd and Congress

H. & T. C. R. R. Depot, Austin. Tex.



Houston and Texas Central Railroad Built 1902 | 3rd and Congress



SP Station enlarged 1935 | 3rd and Congress



ENFIELD SPECIAL FROM AUSTIN TEX. TO WASHINGTON D.C.
VIA S.P. LINES.

Enfield Special 1920 | SP Station



Train No.42 departing from SP station for Houston March 6, 1946



MKT No. 8 northbound Bluebonnet 1949 | Frank Moore



Last Trolley on 1st Street 1940



Last Trolley 1940 | Congress and 6th



African American workers laying track, 1890s | Congress?



African American workers laying track, 1890s | 3rd street



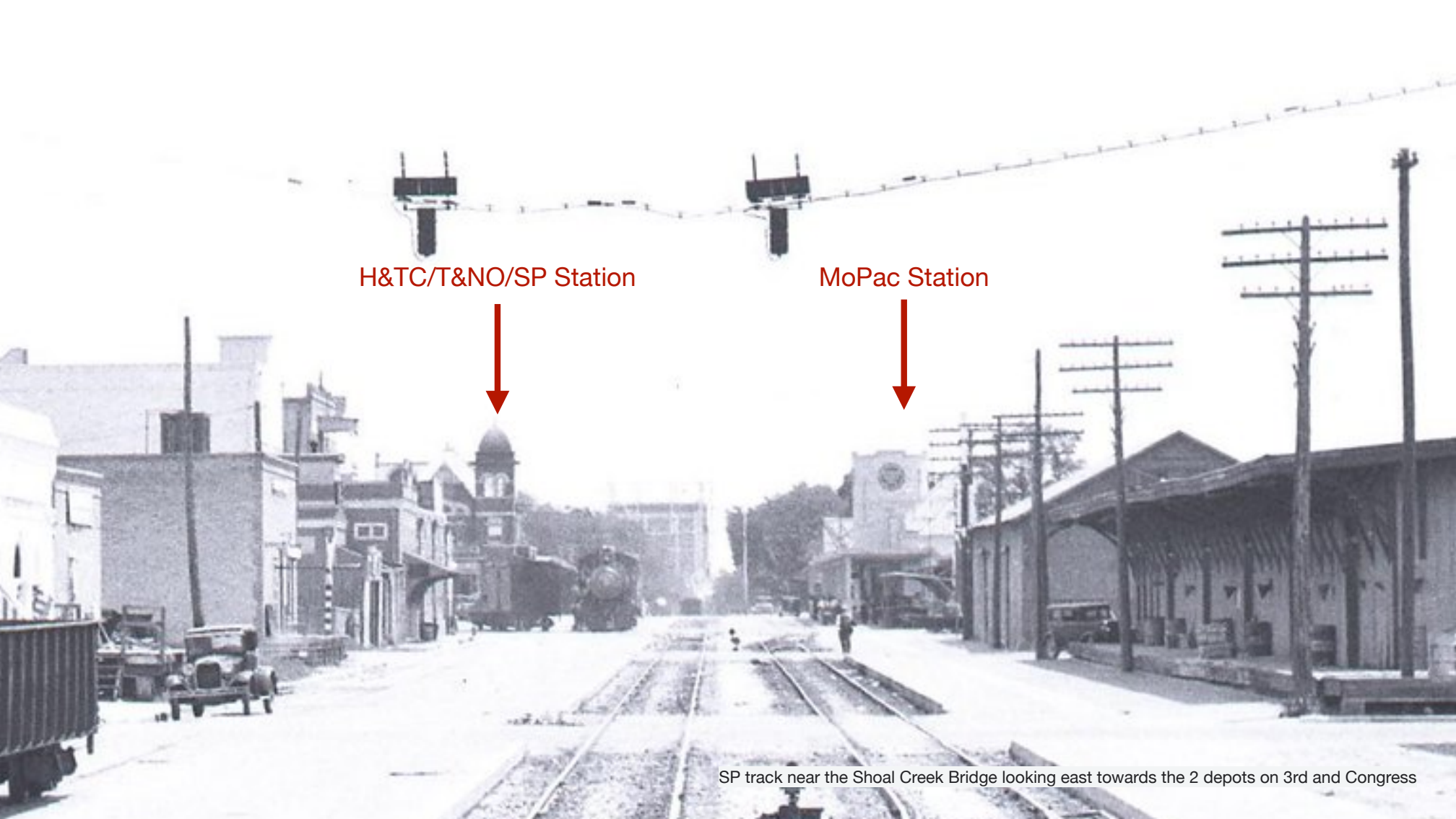
← H&TC/T&NO/SP
Station

African American workers laying track, 1890s | 3rd street

01 421



SP track near the Shoal Creek Bridge looking east towards the 2 depots on 3rd and Congress



H&TC/T&NO/SP Station

MoPac Station

SP track near the Shoal Creek Bridge looking east towards the 2 depots on 3rd and Congress



Third Street and Colorado 1981 | Gary Phelps



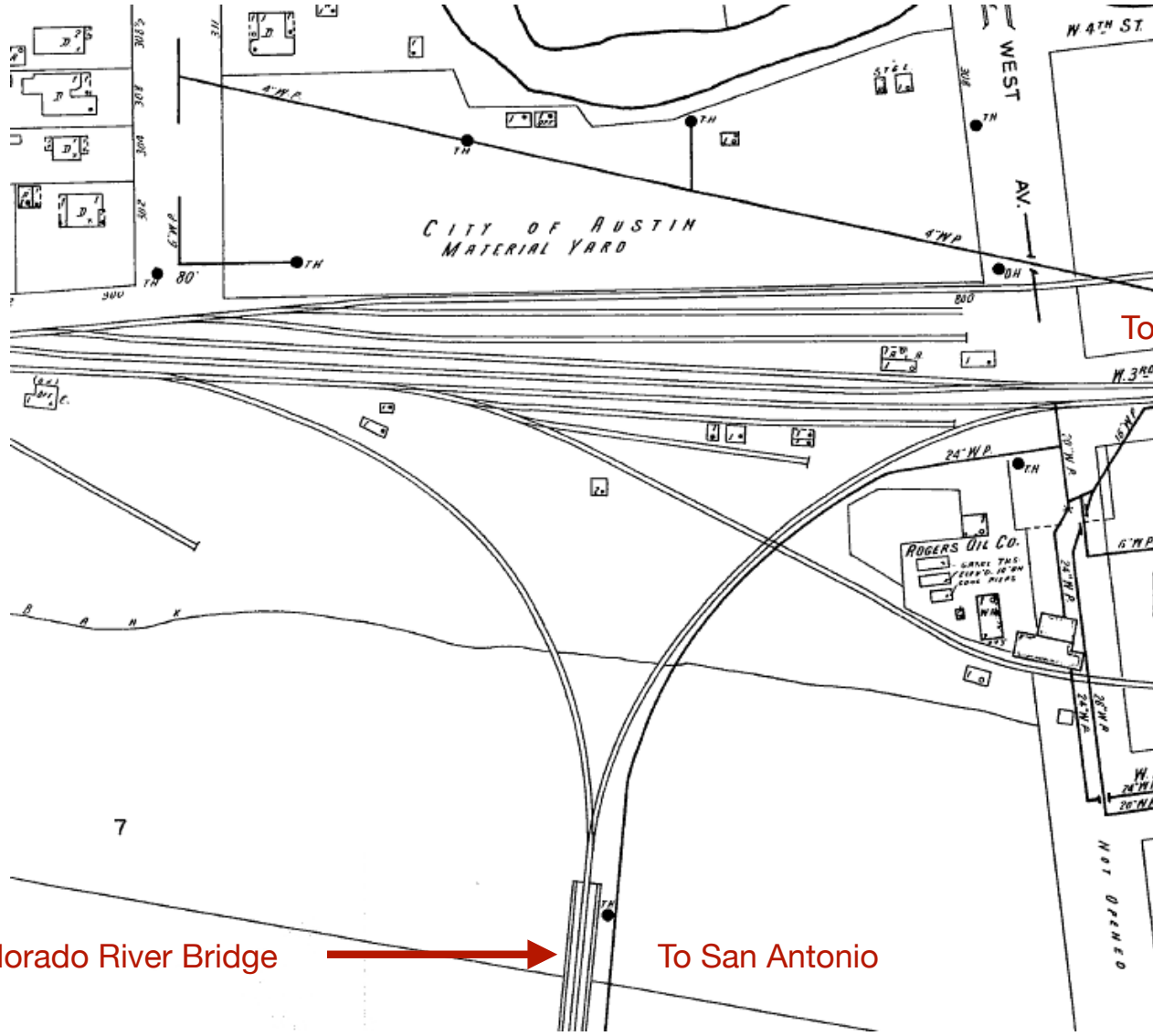
SP 4th and Nueces, facing east 1981 | Gary Phelps



MoPac Freight Station 3rd and Lavaca | Gary Phelps



MoPac Freight Station 3rd and Lavaca | Gary Phelps



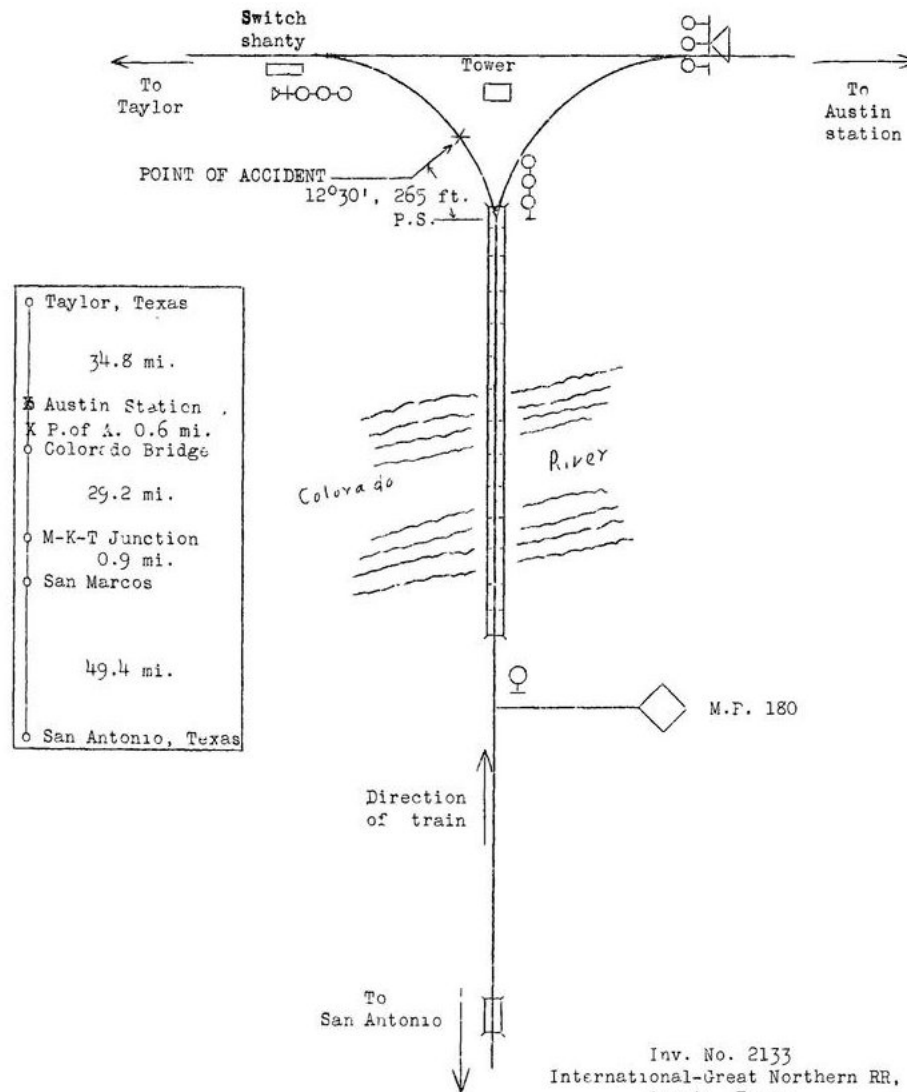
To Taylor

To Austin station

City of Austin
Power Plant

Colorado River Bridge

To San Antonio

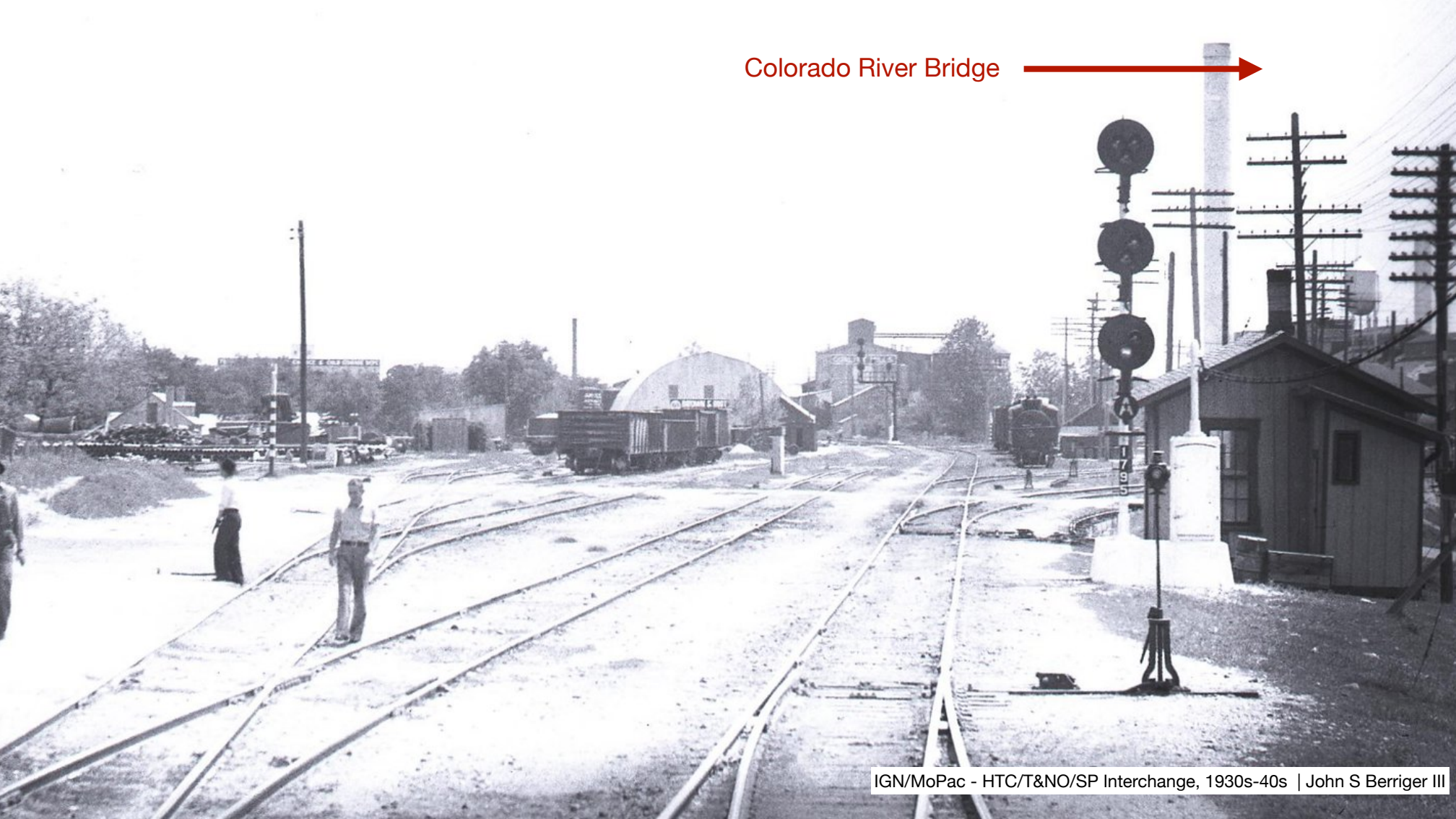


Inv. No. 2133
International-Great Northern RR,
Austin, Texas
Jan. 5, 1937



IGN/MoPac - HTC/T&NO/SP Interchange, 1930s-40s | John S Berriger III

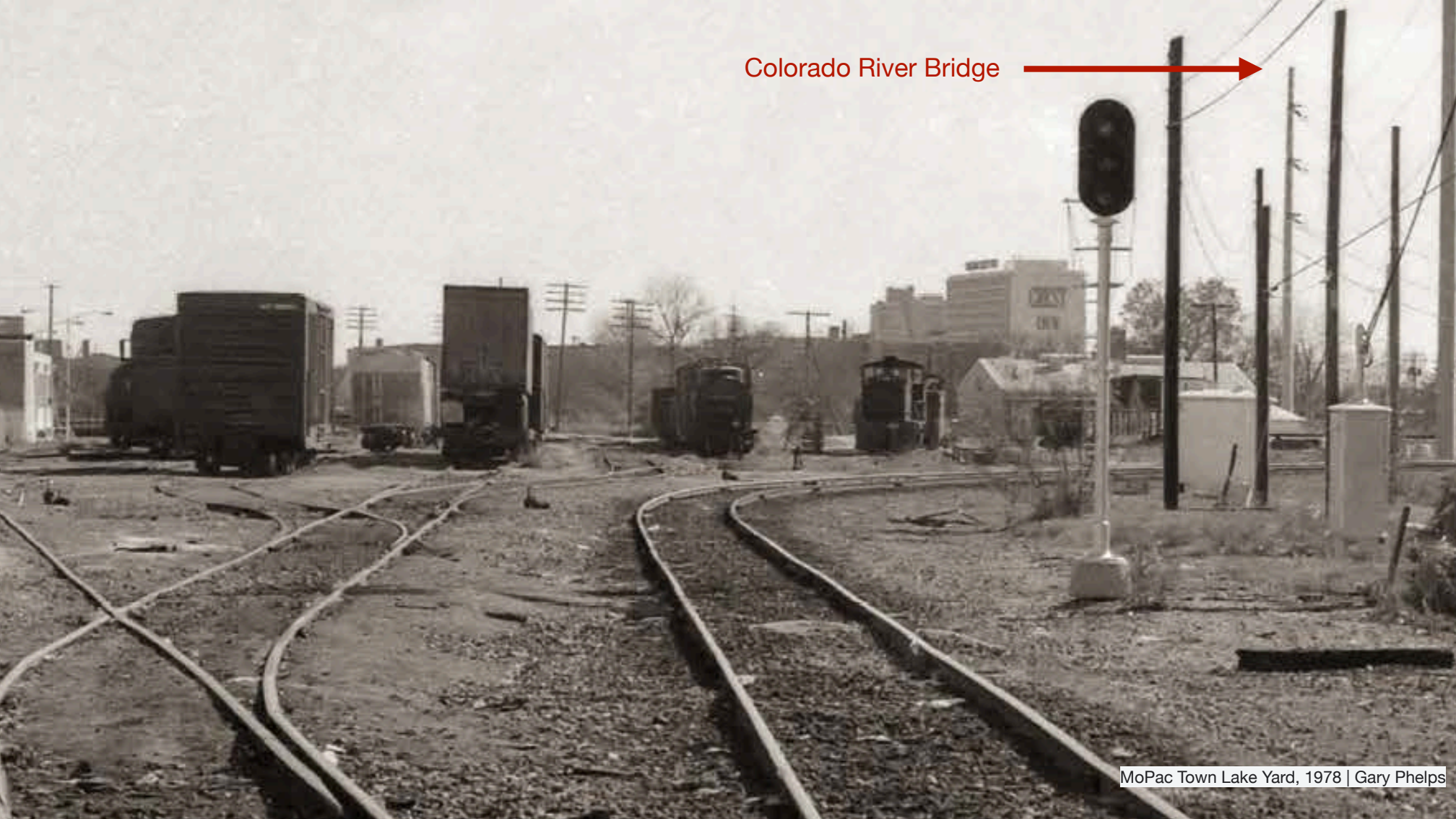
Colorado River Bridge





MoPac Town Lake Yard, 1978 | Gary Phelps

Colorado River Bridge





Katy Texas Special Train No.7 1954 | Roger S Plummer



Colorado bridge approach, 1965 | J Parker Lamb



Tower 205 pre-1934 | John S Berriger III



Tower 205 pre-1934 | John S Berriger III



UT Old Main





MoPac Town Lake Yard, 1965 | J Parker Lamb



MoPac and Katy 1965 | at MoPac Station | J Parker Lamb



MoPac station, 1962 | J Parker Lamb



Last MoPac passenger train, 1970 | MoPac Station



MoPac cut, 1964 | J Parker Lamb

Links

- Valuation Maps National Archives <https://catalog.archives.gov/search?q=austin&f.ancestorNalDs=562366&tabType=online>
- Barriger Photo Collection <https://www.flickr.com/photos/barrigerlibrary/albums/72157641134680925>
- Portal to Texas History <https://texashistory.unt.edu/search/?q=austin+railroad&t=fulltext&start=72>
- J Parler Lamb Collection <http://www.railphoto-art.org/collections/lamb/group-six/>
- Texas Railroad History <http://txrrhistory.com/towers/205/205.htm>

Downtown Austin Railroading

A brief overview (and mainly the Katy Yard)

Riley Triggs | Austin Model Railway Society | 18 July 2020



> NEXT